

E2M0.7 and E2M1.5 Series Rotary Vane Pump Motor Capacitor Upgrade Manual



1. Scope of this manual

This manual provides installation instructions for the Edwards replacement capacitor kits for the E2M0.7 and E2M1.5 motors. You must fit the replacement capacitors as specified in this manual.

2. Safety

All electrical work and modifications must be carried out by a suitably qualified person.



Warning

Disconnect the pumping system and accessories from the electrical supply so that they cannot be operated accidentally.

Wait 2 minutes before starting to work on the pump.

3. Kit contents and tools required



Photo 1 – Kit Contents

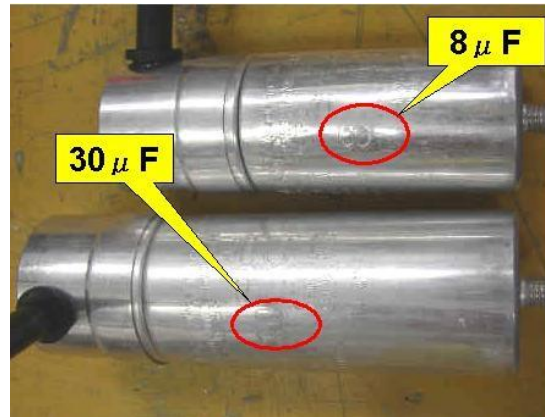


Photo 2 – Tools required

4. Check capacitor

Photo 3

Make sure you have the correct capacitor kit for your pump. Check the pump type from the oil box label.



Pump type	A37X-XX-902	A37X-XX-919
Motor Voltage	100/120V	200/230V
Capacitor	30μF	8μF

5. Disassembly



Photo 4 - Remove screws from lid

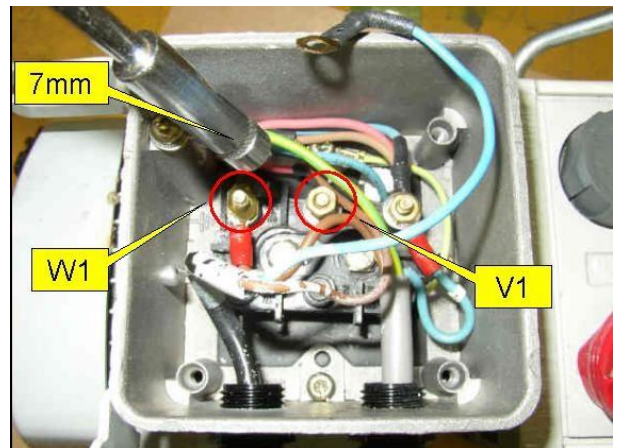


Photo 5 - Disconnect capacitor leads



Photo 6 - Undo the cable gland to free the capacitor

Photo 7 and 8 - Remove capacitor from the motor. Dispose of capacitor.

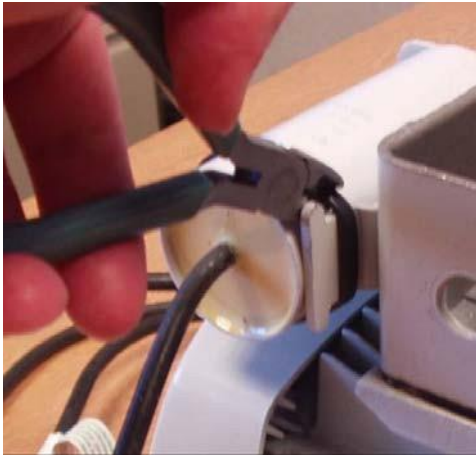


Photo 7



Photo 8

6. Re-assembly

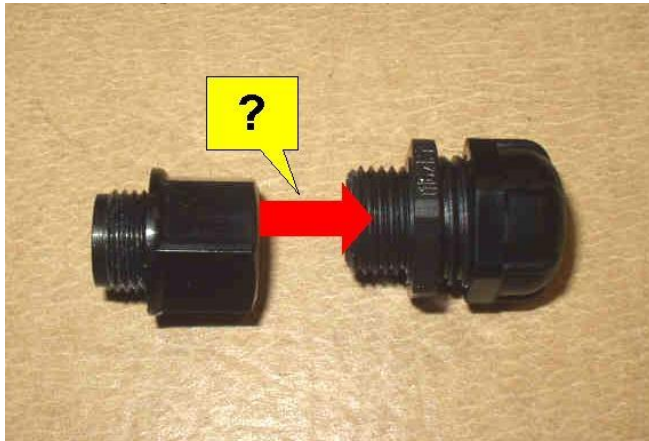


Photo 9 - Adapter may be needed for terminal box



Photo 10 - Fit cable gland to capacitor lead

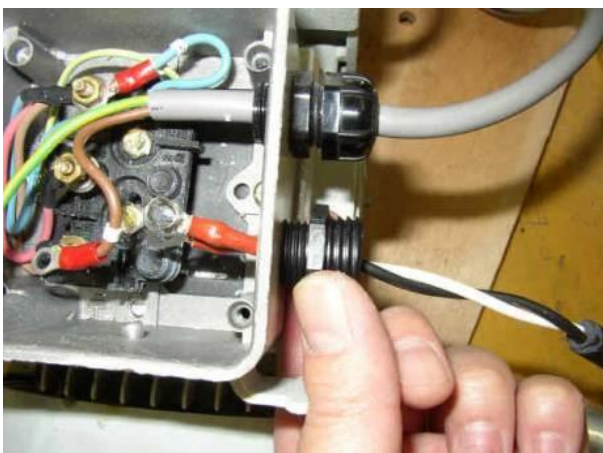


Photo 11 - Fit cable gland to motor

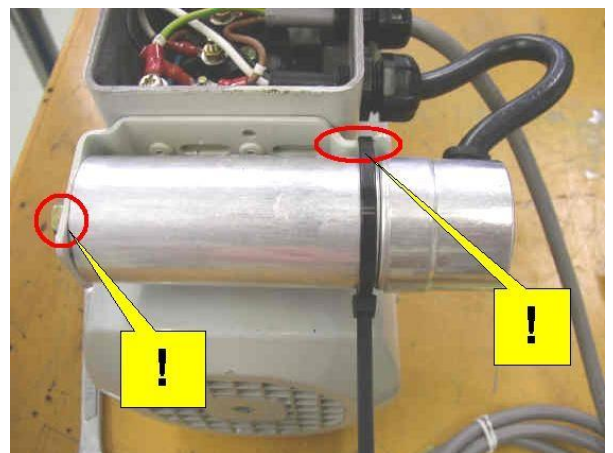


Photo 12 - Secure nut and cable tie

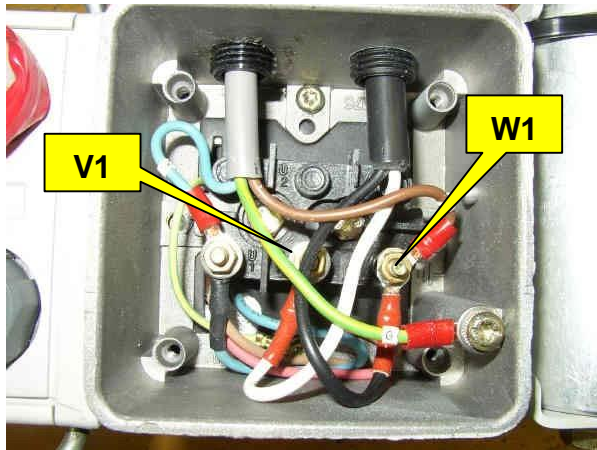


Photo 13 - Re-connect the capacitor wires and mains supply



Photo 14 – Tighten cable gland



Photo 15 - Replace the lid

7. Test the motor condition

Test the earth (ground) continuity and the insulation resistance of the pump motor in accordance with local regulations for periodic testing of electrical equipment. We recommend that the earth (ground) continuity is less than 0.1Ω and the insulation resistance is greater than $10M\Omega$. If the motor fails these tests, you must replace the motor.



Crawley Business Quarter, Manor Royal, Crawley, West Sussex, RH10 2LW, UK
Telephone: +44 (0) 1293 528844 Fax: +44 (0) 1293 533453

<http://www.edwardsvacuum.com>

Official Distributor in Australia



EZZI VISION

Vacuum and Thin Film Technology

CONTACT US

T: 1800 GO EZZI

E: sales@ezzivision.com.au

W: ezzivision.com.au

VIC: 13/62 Ramset Drive, Chirnside Park,
VIC 3116, Australia

NSW: Unit 1, 80 O'Riordan St, Alexandria,
NSW 2015, Australia

WA: Unit 11, 24 Baile Road, Canning Vale,
WA 6155 Australia

Why Choose Ezzi Vision?

'Partner with excellence in Vacuum Technology, opt for Ezzi Vision'

Decades of Expertise: With 30+ years in the industry, Ezzi Vision is highly experienced in vacuum technology and its applications.

Quality Assurance: We ensure that every Edwards pump meets the highest standards of performance and reliability.

Innovative Solutions: Leading in technological advancements, we provide the latest Edwards pumps, known for their innovation and efficiency.

Customer-Centric: Ezzi Vision delivers personalized service and expert advice to meet your needs.

Nationwide: Ezzi Vision brings quality vacuum solutions to all of Australia.

After-Sales Support: We provide comprehensive support to maintain your equipment's longevity and efficiency.

Sustainable Practices: Our products at Ezzi Vision align with contemporary environmental standards, promoting sustainable practices in your business operations.

With Ezzi Vision propel your business forward using state-of-the-art technology and steadfast support.

Return the equipment or components for service

Before you send your equipment to us for service or for any other reason, you must send us a completed Declaration of Contamination of Vacuum Equipment and Components - Form HS2. The HS2 form tells us if any substances found in the equipment are hazardous, which is important for the safety of our employees and all other people involved in the service of your equipment. The hazard information also lets us select the correct procedures to service your equipment.

We provide instructions for completing the form in the Declaration of Contamination of Vacuum equipment and Components - Procedure HS1.

If you are returning a vacuum pump, note the following:

- If a pump is configured to suit the application, make a record of the configuration before returning the pump. All replacement pumps will be supplied with default factory settings.
- Do not return a pump with accessories fitted. Remove all accessories and retain them for future use.
- The instruction in the returns procedure to drain all fluids does not apply to the lubricant in pump oil reservoirs.

Download the latest documents from www.edwardsvacuum.com/HSForms/, follow the procedure in HS1, fill in the electronic HS2 form, print it, sign it, and return the signed copy to Edwards.

Note: *If we do not receive a completed HS2 form, we will not accept the return of the equipment.*

